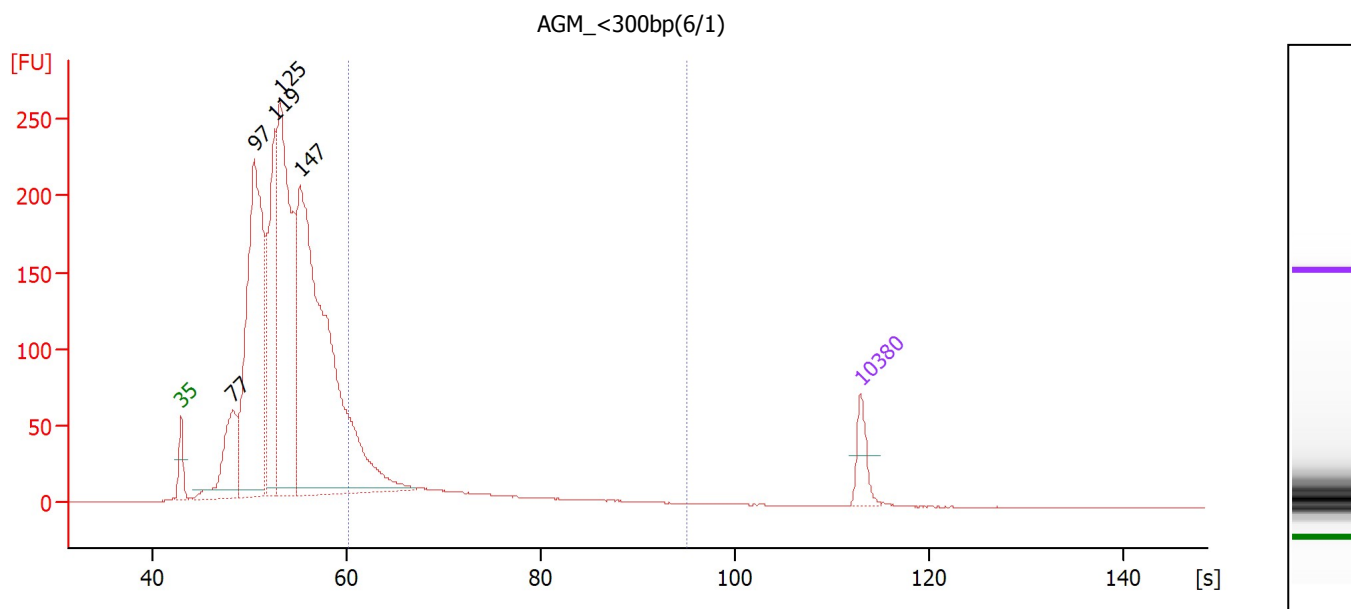


Assay Class: High Sensitivity DNA Assay  
 Data Path: C:\...gh Sensitivity DNA Assay\_DE54704331\_2010-06-09\_16-29-15.xad

Created: 6/9/2010 4:29:15 PM  
 Modified: 6/9/2010 5:12:35 PM

### Electropherogram Summary Continued ...



### Overall Results for sample 5 : AGM\_<300bp(6/1)

Number of peaks found: 5      Corr. Area 1: 416.5  
 Noise: 0.1

### Peak table for sample 5 : AGM\_<300bp(6/1)

Peak	Size [bp]	Conc. [pg/μl]	Molarity [pmol/l]	Observations
1	35	125.00	5,411.2	Lower Marker
2	77	413.56	8,121.1	
3	97	1,691.79	26,324.7	
4	119	786.58	9,999.3	
5	125	1,506.99	18,261.2	
6	147	2,631.02	27,070.2	Upper Marker
7	10,380	75.00	10.9	

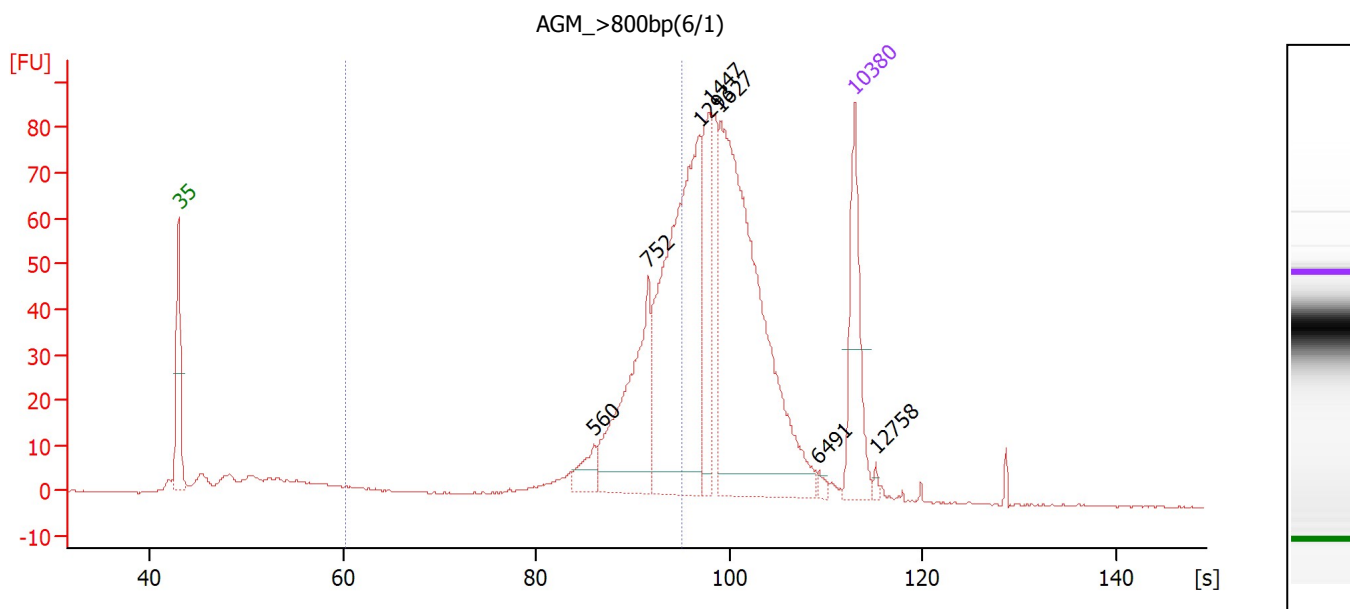
### Region table for sample 5 : AGM\_<300bp(6/1)

From [s]	To [s]	Corr. Area	% of Total	Average Size [bp]	Size distribution in CV [%]	Conc. [pg/μl]	Molarity [pmol/l]	Color
60.27	95.03	416.5	11	308	42.9	702.22	4,031.7	Blue

Assay Class: High Sensitivity DNA Assay  
 Data Path: C:\...gh Sensitivity DNA Assay\_DE54704331\_2010-06-09\_16-29-15.xad

Created: 6/9/2010 4:29:15 PM  
 Modified: 6/9/2010 5:12:35 PM

### Electropherogram Summary Continued ...



### Overall Results for sample 6 : AGM >800bp(6/1)

Number of peaks found: 7      Corr. Area 1: 389.0  
 Noise: 0.1

### Peak table for sample 6 : AGM >800bp(6/1)

Peak	Size [bp]	Conc. [pg/μl]	Molarity [pmol/l]	Observations
1	35	125.00	5,411.2	Lower Marker
2	560	21.78	59.0	
3	752	151.98	306.3	
4	1,293	297.90	349.2	
5	1,447	83.24	87.2	
6	1,627	354.90	330.5	
7	6,491	4.23	1.0	
8	10,380	75.00	10.9	Upper Marker
9	12,758	0.00	0.0	

### Region table for sample 6 : AGM >800bp(6/1)

From [s]	To [s]	Corr. Area	% of Total	Average Size [bp]	Size distribution in CV [%]	Conc. [pg/μl]	Molarity [pmol/l]	Color
60.27	95.03	389.0	32	733	24.7	422.40	1,013.0	Blue